

ESSEX PRIDE 26

**SATURDAY 20th JUNE
CENTRAL PARK,
CHELMSFORD**

**A community celebration
of lesbian, gay, bisexual
& transgender life in
Essex & beyond**



PROUDLY SPONSORED BY:



a.r.u. | Proudly supporting
the LGBTQ+ community

Essex Pride 2026 is proudly supported by:



a.r.u. | Proudly supporting
the LGBTQ+ community



ARMY



first bus



TELEDYNE



**BE AT
ONE**
COCKTAIL BAR

S&L

**Chelmsford
Theatre**



Nando's

Our
COOP



**Chelmsford
City Council**

Sainsbury's | **birketts**
Next Level Law

TESCO



VALKYRIE
FINANCIAL ADVICE



Moat

BOOTY CALL
KIDING CANCER'S BOOTY

greateranglia

**CHELMSFORD
YOU**



**ESSEX & SUFFOLK
WATER** *living water*

**THE BIG
YELLOW
SELF
STORAGE**

Lighting and sound
provided by:

KI
SOUND & LIGHT

Dance tent
provided by:

POP WORLD

Bars
provided by:



web partner:



Welcome to Essex Pride 2026

This year marks the 22nd Essex Pride. From our beginnings at Smiths Bar in 2004, the event has grown into a vibrant celebration for the whole community — a space to honour diversity, champion acceptance, and showcase Essex as a welcoming and inclusive place to live.

Being involved since the very beginning has been incredibly rewarding. For anyone questioning their sexuality or still finding their place, I hope Essex Pride gives you the courage to be yourself, the freedom to express who you are, and the chance to make new friends and unforgettable memories.

On behalf of the entire team, we wish you a safe, joyful, and truly happy Pride.
Garry Ormes, Essex Pride Chairman

Event Information

First Aid & Wellbeing Zone

First Aid is provided by PFA Services.

For the exact location, please refer to the site map.

Lost & Found

If you lose personal items, become separated from friends or family, or find someone else's belongings, please go to the Main Entrance.

Sun Protection

Even on cloudy days, sunburn is possible. Please wear suitable sun protection or seek shade when needed. Stay hydrated throughout the day and drink plenty of water.

Age Restrictions

The event is open to all ages. However, some live performances may not be suitable for children — parental or viewer discretion is advised.

Alcohol can only be purchased by those 18+, and proof of age may be required.

Drink Responsibly

Pace yourself. Alternate alcoholic drinks with soft drinks and make sure to eat regularly.

No Drugs Policy

Essex Pride operates a strict no-drugs policy. Anyone found using illegal substances will be asked to leave and may be reported to Essex Police.

Event Stewards

Our Stewards and security team are here to help. If you have any concerns, please speak to them at any time.

Photography & Videography

Photography and filming will take place throughout the event and may be used for publicity.

If you prefer not to be included, please inform the photographer.

Essex Pride cannot accept liability for images used.



ESSEX PRIDE 26

Family zone

Join us in the family zone with fun activities throughout the day.

• Superheroes in the park: 12:30 - 2:30

Pride-themed story sessions inspired by Superheroes in the Park, alongside a creative mask-making activity where children can design their very own Pride Superhero mask.

Mask making runs throughout the session

Story session times

(on the pride bus)

12:30pm

1:00pm

1:30pm

2:00pm



• Scraps to Treasure: 12:30 - 5:00pm

Put your creativity to the test by transforming recycled materials into the perfect accessory for Essex Pride.

Create a colourful headdress, design your own Pride wand, or make something completely unique. A fun, sustainable activity for all ages



• Bath Bomb making with Lush Chelmsford: 12:30 - 5:00pm

Join the Lush team and make your very own FREE bath bomb.

Join a managed queue and take part in small-group sessions.



• Dance Exclusive workshop: 4:30 - 5:00pm

Finish the day with a fun-filled dance workshop led by Dance Exclusive.

Learn a Pride-inspired Britney routine and join in the celebration.



YOUR VOICE YOUR PRIDE

Essex Pride stands in support for our whole community.

Please use space on our pledge wall space to tell us about the changes you would like to see in the next 5 years for the LGBTQ+ community.





a.r.u. | Anglia Ruskin
University



a.r.u. | #ARUProud

to be an LGBTQ+
inclusive community.
Find out how >>



We are Chelmsford's home
of glamazons, drag artistry,
queer comedy, LGBTQI+
storytelling and more.




Glitz and Glamazons

at Chelmsford Theatre

Proud partners with Essex Pride

01245 606505
chelmsfordtheatre.co.uk

 Chelmsford
Theatre



Teledyne e2v is a global leader in specialised components and subsystems for innovative solutions in medical, science, aerospace, defence, and industrial applications. With a rich history dating back to 1947, Teledyne e2v is headquartered in Chelmsford, Essex.

Our Chelmsford site is proud to be one of the largest private employers in the area and is home to an award-winning apprenticeship scheme, offering opportunities in Business and Engineering. It is also home to our WellBeing@Work Committee. Our committee regularly hosts events throughout the year to both celebrate and educate our colleagues. Some of our featured topics include LGBTQ+, Neurodiversity, Mental health awareness and Multicultural history.



TELEDYNE





WWW.AQUABRIDGE.LTD.CO.UK
SOLICITORS IN COLCHESTER, CHELMSFORD & ILLINGHAM

PROUD TO BE SUPPORTING ESSEX PRIDE

TAKING YOUR BUSINESS
SERIOUSLY

We're committed to being an inclusive organisation
that enables colleagues and customers to thrive.

HAPPY
PRIDE



from  Moat



We're proud to have been awarded 'Pledge Pioneer' status in recognition of what we've already done to meet the three strands of the LGBTQ+ Housing Pledge by HouseProud and Stonewall Housing.

We're exploring the possibility of setting up a Moat customer LGBTQ+ inclusion group to help us improve further.

If you're a Moat customer and might be interested in joining, we'd love to hear from you - Come and see us on our stall or contact us - 0300 323 0011 / moat.co.uk/contact-us.

KARAOKE IN A COLON?

**BOOTY
CALL**

KICKING CANCER'S BOOTY

This is Peach Perfect - lifesaving cancer awareness like you've never seen before!

Booty Call CIC brings cancer awareness into queer spaces. Not clinics, not leaflets but Prides, clubs, bars - places where people actually listen.

Because LGBTQ+ people are getting checked later. And with cancer, later usually means worse.

Peach Perfect: Karaoke in the Colon is your moment to belt out a tune from inside a digestive tract. It's weird, it's fun and you won't forget it. That's the point.

In between songs, there's a simple message: know what's normal for you and if something changes, get it checked.

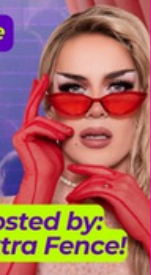
Come find us and get on the mic - you'll leave knowing something that might one day matter.

And you're helping us kick cancer's booty!

CHECK YOUR BUM, HUN!

www.bootycallcic.org
[@bootycallcic](https://twitter.com/bootycallcic)

Hosted by:
Elektra Fence!



ESSEX PRIDE

LGBTQ+ FESTIVAL **26**

FESTIVAL STAGE RUNNING ORDER

12:00	- PRIDE ANTHEMS -
12:15	- NINA AMBROSE - - CAODS - - THE VISION -
13:25	- CARROT - - SIRENA HART - - ALCASTAR - - DANNY BEARD -
15:05	- SASKI - - KPOP DREAMWORLD - - ABSOLUTE BRITNEY: TRIBUTE -
16:30	- DRAG WITH NO NAME - - HIGHER LOVE: WHITNEY TRIBUTE - - CHERYL THE QUEEN -
18:15	- UNION J WITH JJ & JAYMI - - KATRINA -
19:15	- ATOMIC KITTEN - - NATASHA HAMILTON - - BOOTY LUV -
20:30	- DANCE EXCLUSIVE -
20:45- 21:30	- PARTY ANTHEMS -



a.r.u.

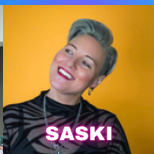
Proudly supporting
the LGBTQ+ community



LIVE ON THE FESTIVAL STAGE YOUR HOSTS



**NINA
AMBROSE**



SASKI



CARROT

LIVE MUSIC



a.r.u.

Proudly supporting
the LGBTQ+ community



**UNION J
JJ & JAYMI**



**ATOMIC * KITTEN
NATASHA HAMILTON**



katrina
formerly of Katrina & the Waves



**Absolute
BRINY**



BOOTY LUV



**HIGHER LOVE
WHITNEY TRIBUTE**



ALCASTAR



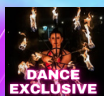
**SIRENA
HART**



**KPOP
DREAMWORLD**



THE VISION



**DANCE
EXCLUSIVE**



**AIDS
Musicals
UNLEASHED
CAODS**

TOP DRAG



DRAG WITH NO NAME



DANNY BEARD



CHERYL THE QUEEN



CARROT

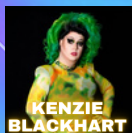


SIRENA HART

THE CABARET STAGE



DWNN



KENZIE BLACKHART



RUBY VIOLET



WILMA FINGADOO



LYNDSAY CASSIDY



HOTMALES DRAG



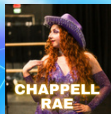
TUPPENCE A BAG



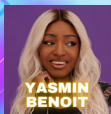
House of Stage



SOME VOICES



CHAPPELL RAE



YASMIN BENOIT



SINGSPACE MUSICAL THEATRE CHOIR



MAN I NEED

ESSEX PRIDE

LGBTQ+ FESTIVAL **26**

CABARET STAGE RUNNING ORDER

11:30	- PRIDE ANTHEMS -
12:30	- KENZIE BLACKHEART - - HOTH AUS DRAG -
13:30	- RUBY VIOLET - - THE OLIVIA DEAN EXPERIENCE - - SING SPACE CHOIR -
14:40	- DRAG WITH NO NAME - - ELISHA MOSES: WELCOME TO THE WEIRD -
15:40	- WILMA FINGADOO - - SOME VOICES CHOIR - - IN CONVERSATION WITH: YASMIN BENOIT - - CHAPPELL RAE: TRIBUTE -
17:00	- SIRENA HART - - WAVEY DIYA SLAYE - - LYNDSAY CASSIDY - - TUPPENCE A BAG -
18:30	- CLOSE -



a.r.u.

Proudly supporting
the LGBTQ+ community





Plan your next big adventure

We all imagine a future differently and we all have unique financial challenges. We know that talking about money goals and challenges is very personal. So it's reassuring to know that there is someone on hand that you can trust, to help you build your future your way.

Let's start a conversation



Associate Partner Practice

St James's Place



Lauren Peters
Managing Director

07850 873126
lauren.peters@sjpp.co.uk
www.valkyriefinancialadvice.co.uk

Valkyrie Financial Advice Ltd is an Appointed Representative of and represents only St James's Place Wealth Management plc (which is authorised and regulated by the Financial Conduct Authority) for the purpose of advising solely on the group's wealth management products and services, more details of which are set out on the group's website www.sjp.co.uk/products. The 'St James's Place Partnership' and the titles 'Partner' and 'Partner Practice' are marketing terms used to describe St James's Place representatives.

SJP Approved 21/05/2026

SJP03064_DS 01 (02/23)

IN CONVERSATION WITH

YASMIN BENOIT



Join Yasmin on the Cabaret stage at 4:15pm for a fireside style chat about her work as an LGBTQ+ activist.

This will include:

- Realising they were asexual.
- Becoming an activist.
- Asexuality as part of Pride / the queer community.
- Her experience at Pride events and being the first asexual person to lead NYC Pride and Pride in London.
- Myths and misconceptions about asexuality.
 - Being aromantic and the distinction.
 - Intersectionality.





Essex Police attends Pride events as part of our wider commitment to community engagement and neighbourhood policing.

Impartiality is a cornerstone of British policing and is essential to maintaining public trust and confidence. Our presence at events such as Pride is not about endorsing a political cause or campaign. Instead, it reflects our responsibility to serve all communities fairly, respectfully and without bias.

By attending community events, officers are able to listen, engage and build understanding with members of the public, including groups who may historically have felt under-represented or less confident in policing. This engagement helps us improve trust, encourage reporting of crime, and ensure policing services are accessible to everyone.

Essex Police serves a diverse county. Attending events across Essex allows us to strengthen relationships, challenge misconceptions, and demonstrate our commitment to fair, inclusive and ethical policing – for all communities.



Birketts is committed to diversity and inclusion, championing the different aspects of our values.

B-PROUD is our LGBTQIA+ network, designed to create a welcoming space where colleagues can connect, share experiences, and spark ideas that strengthen our inclusive culture.

Together, we're building a workplace where everyone feels respected, valued, and proud to be themselves.

birketts.co.uk

Bristol | Cambridge | Chelmsford
Ipswich | London | Norwich | Sevenoaks

 **birketts**
Next Level Law

his
her
their
your

OurCoop

We're the UK's largest independent co-operative Society,
owned by over one million members.

Every day we provide essential services and products to
communities through our food stores, travel agencies, funeral
homes, nurseries, utilities, mobile and digital platforms.

We're committed to inclusion, acceptance and solidarity, and
we're here for everyone!

Love with Pride



SCAN HERE

Our
COOP



first bus

Proud to support

Essex Pride

How to get there

Simply catch any First Bus service into the city centre, and get off at the bus station. Central Park is just a short walk away!

Single tickets are only £3



Find out more about
our services in Essex.

Scan the QR code to head
over to our website.

Follow us on social media

 First Bus

 @officialfirstbus

 @firstbusofficial

ESSEX PRIDE 26

THE popWORLD SILENT DISCO

 2 ZONES OF MUSIC 

 COCKTAIL BAR 

**You can't
make a
rainbow
without
orange.**



Sainsbury's

Support and social groups

Essex and the surrounding areas have many organisations and venues that provide advice, support and social opportunities for LGBT people:

Basildon

Transliving International
Women 4 Women Essex

Chelmsford

Bar Plus
Queer Collective (ARU SU)
Essex Pride

Colchester

Dragonfly Lounge
The OutHouse
Lesbian & Gay Christian Movement
Terence Higgins Trust
University of Essex LGBTQ+ Society

Essex LGBT Alliance

Colchester Kings Rugby club

Southend-on-Sea

Gay Essex Men's Social & Support Group
Women 4 Women Essex

Sexual Health Information

Sexual health services in Essex (excluding Southend and Thurrock) are now run by **Essex Sexual Health service**.

They offer Walk in services and appointment based consultations at many locations throughout Essex.

Scan the QR codes to access their websites directly.

Call 0300 003 1212

or

visit: www.eshs.org.uk



Southend residents

Access Essex Sexual Health services (above)

or Brook Southend:

Call: 01702 411701

or:

visit: www.sexualhealthsouthend.co.uk



Thurrock residents

Access Brook Health

visit: www.brook.org.uk



National and international support groups

There are many national and international organisations that support the LGBT community:

Age UK - working to improve later life for all, including LGBT people.

Albert Kennedy Trust - for young LGBT people living with hostility.

Beaumont Society - national support group for the Trans community.

biUK - for bisexual research and activism.

Educate & Celebrate - giving teachers the tools to tackle LGBT-phobia.

FLAGS Scouts Active Support Unit - support for LGBT adults in Scouts.

Fire Brigades Union - Gay & Lesbian Members.

Gay Outdoor Club - recreational activities for LGBT people.

Gay & Lesbian Association of Doctors & Dentists.

Gay & Lesbian Association for Racing & Yachting.

Health with Pride - resource for LGBT patients and health professionals.

Kings Cross Steelers Rugby Union Club.

LGBT History Month - celebrating achievements of the LGBT community.

London Gay Men's Chorus.

London Spikers Volleyball Club - for men of any sexual orientation.

Mermaids - helping gender diverse young people and their families.

Metro Charity

Mind Out .org.uk - mental health service for LGBTQ community

National Union of Students - supporting LGBT students.

NAZ Project - sexual health, HIV prevention and support for BAME people.

Opening Doors London - services and information for older LGBT people.

Outdoor Lads - social group for gay and bisexual men.

Press for Change - the UK's leading experts in transgender law.

Proud 2 Serve - LGBT Network for the British Armed Forces.

Queer Youth Network - national LGBT youth network.

rukus! - working with black LGBT artists.

Sailing & Cruising Association - LGBT sailing and powerboat club.

Stonewall - international organisation working for LGBT equality.

True Vision - providing info about hate crimes and how to report them.

Transpire - Supporting transgender people, friends and Family

Trans Living - Supporting the trans community

.UK Black Pride - Europe's largest celebration for African, Asian, Middle Eastern, Latin American and Caribbean-heritage LGBTQI+ people.



S&L

OFFICIAL

ESSEX
PRIDE

AFTERPARTY

SATURDAY 20TH JUNE

POPWORLD
TAKEOVER

RAINBOW COCKTAIL

RAINBOW SHOTS

OPEN TILL LATE

WWW.SLUGANDLETTUCE.CO.UK

Bar Plus
159 Moulsham street
Chelmsford
CM2 0LD
Tel: 01245 408992
us@bar.plus



SPONSORS OF



OFFICIAL
AFTER
PARTY
8PM TO
4AM